

# INSERT NORD

## ARTIS 3000U PRO B3 LED UV-PRINTER

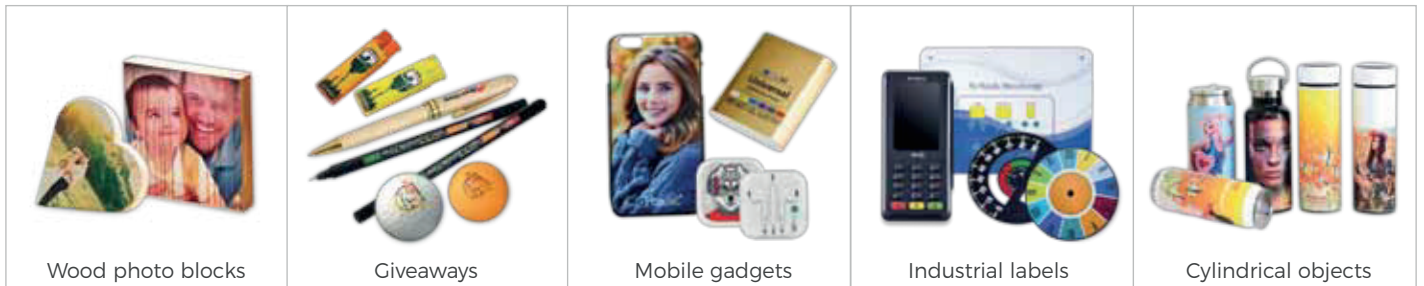


### ALL NEW artis 3000U PRO, THE B3 LED UV PRINTER

REDESIGNED TO SUCCESSFULLY CONVERT  
IDEAS INTO REAL PRODUCTS

-  CMYK+WW / CMYK+WVVVV / CMYK+WW+VV Ink System
-  Custom Rotary printing
-  B3, 360\*500 mm (14.17 \* 19.68in)
-  Advanced Varnish printing
-  Up to 720 \* 2880 dpi
-  ADA Braille printing
-  3D Raised Graphics
-  Variable Data Print

### Applications



### Latest technology empowered printing

3D raised UV printing effect and photo realistic graphic textures

Direct printing on all substrates colors & transparent materials

Perfect print match on both rigid and flexible substrates (wood, metal, silicone, rubber etc.)

Vivid color reproduction & creativity in AD materials (small acrylic / glass / wood / aluminum wall signage, door and office signage, table signage support, awards printing etc.)

Up to 17 cm (6.69") optimal printing height for small packaging, gift boxes, corporate promotional items, smartphone accessories, bottle printing to more

Table back to print position and accurate auto-height measurement

Optimal cost with **brand new CISS cartridges and refillable ink system** on demand

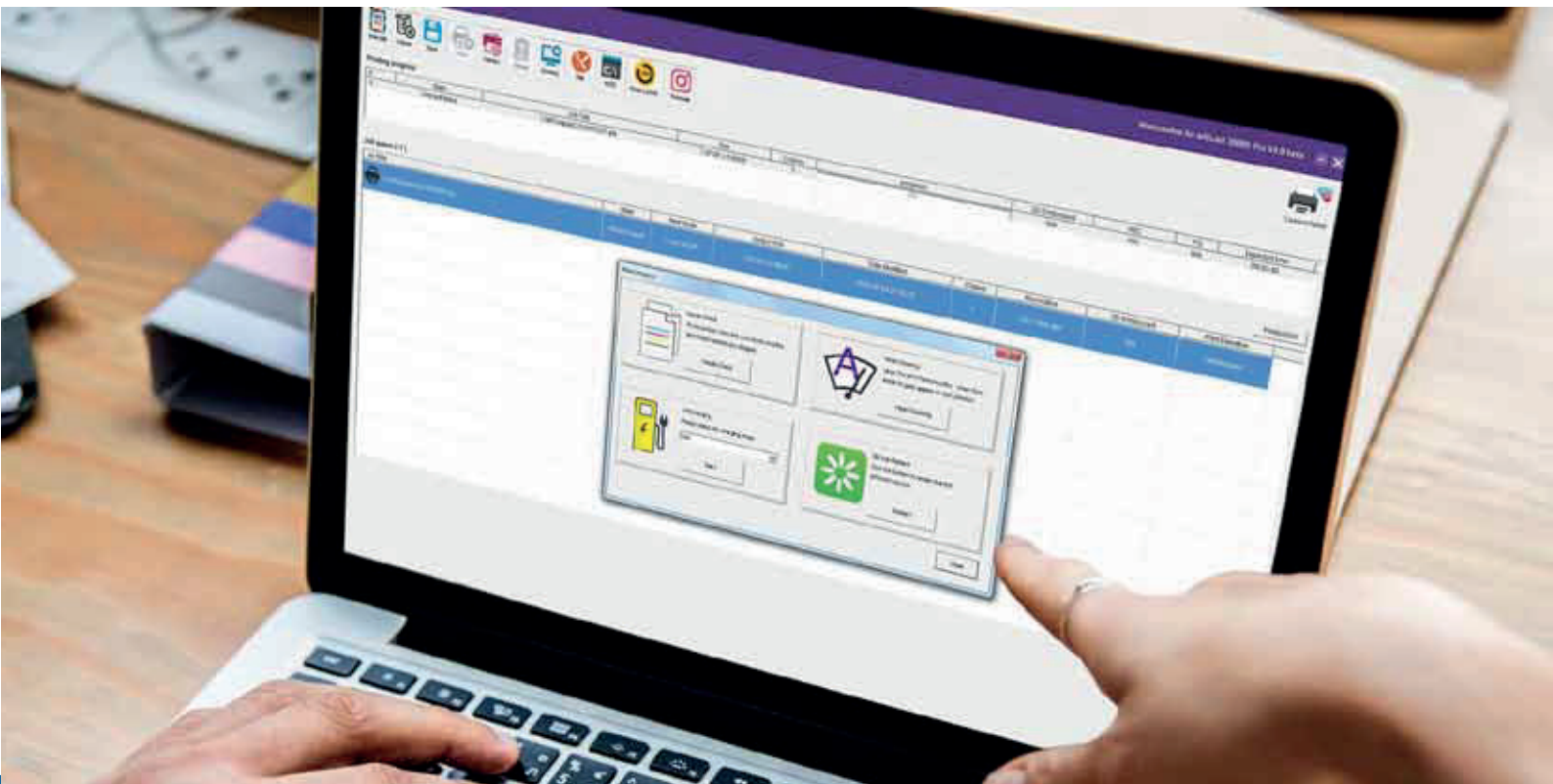
Automatic Command System on customer demand

Multiple QTY printing by one click

High definition printing on plastic due to **anti-static module**

**Fast speed feathering**, enhancing color transition

**Auto repeat** control panel print function, safe and simplified operation



**DIRECTLY CONVERT THE ORDINARY INTO EXTRAORDINARY PRINT EFFECTS**



**VARNISH PRINTING**



**ROTARY PRINTING**



**BRILLE PRINTING**

**Printing specification**

<b>Print speed</b>	A4 size @ 2880*1440 dpi: Unidirection - 460 seconds Bidirection - 245 seconds
<b>Printing technology</b>	UV LED (Built in water cooling)
<b>Ink</b>	<b>Options</b> artisInk DTSAT3 cartridges: 6 Color head (CMYK + WW) 8 Color head (CMYK + WWWW / CMYK + WW + VV)
<b>Media</b>	<b>Applications</b> AD materials, signage, awards printing, small packaging, gift boxes, corporate gifts, promotional items, gadgets and smartphone accessories etc.
	<b>Media Size</b> B3, 380 x 670 mm (14.96 x 26.37 in)
	<b>Height</b> Up to 170 mm (6.69 in)
	<b>Rotary Print</b> On Demand artisJet ROT 360 degrees device
<b>Printing</b>	<b>Printing Size</b> B3, 360 x 500 mm (14.17 x 19.68 in)
	<b>Printing modes</b> 4 pass 8 pass 16 pass
	<b>Print Resolution</b> Up to 720 x 2880 dpi
	<b>Print Head</b> Epson DX7 piezo electric printhead. Made in Japan

**Printer specification**

<b>Connectivity</b>	<b>Nozzles</b>	Variable dot size printing technology, starting from 1.5 pl and up to 21 pl
	<b>Ports</b>	USB 2.0
	<b>Operating systems</b>	Windows
<b>Dimensions</b>	<b>Depth x Width x Height</b>	Printer 940 x 840 x 540 mm (37 x 33.07 x 21.25 in), Shipping 1040 x 1040 x 720 mm (40.94 x 40.94 x 28.34 in)
<b>Weight</b>		Printer 120Kg, Shipping 146 Kg
<b>Content of the box</b>		artis 3000U pro, USB cable, Power cable, User manual book, spare parts package, Driver CD, Ink Chips, Ink tunnels, SCM Cable, Power fuse, RIP Software, Extra back-up Damper
<b>Environmental ranges</b>		10 - 35 °
<b>Power consumption and requirements</b>		~75W, Input voltage (auto ranging) 110V/220V 50 - 60 HZ
<b>Certification</b>		CE / FCC / RoHS / REACH / HC certified
<b>Warranty</b>		2 years warranty

<b>Printer</b>	<b>artis 3000U pro B3 LED UV</b>	
<b>Goods No.</b>	<b>AJ-P3000U-6</b>	<b>AJ-P3000U-8</b>
<b>Ink</b>	<b>DTS Direct to Substrate artisink</b>	
DTSAT3 - 230-001	Cyan UV LED Ink DTSAT3, 230ml	
DTSAT3 - 230-002	Magenta UV LED Ink DTSAT3, 230ml	
DTSAT3 - 230-003	Yellow UV LED Ink DTSAT3, 230ml	
DTSAT3 - 230-004	Black UV LED Ink DTSAT3, 230ml	
DTSAT3 - 230-005	White UV LED Ink DTSAT3, 230ml	
DTSAT3 - 230-006	Varnish UV LED Ink DTSAT3, 230ml	
<b>Cleaning agent</b>		
AJCA-U-200-001	Cleaning agent for LED UV inks, 200 ml	
<b>Fixing agent</b>		
AJCP-U-200-001	Fixing agent A/B liquids for UV LED inks, 200ml	

**ECO**

Go green with artisJet's DTSAT3 UV inks. Print toxin free and virtually odorless. DTSAT3 UV inks are environmentally friendly. UV inks are cured and fixed to the substrate when being activated with UV light. The curing process hardens the ink, without any evaporation. Ideal for general industrial use, restaurants, hotels, hospitals and indoor signage application.



 **artisJet WorkStation & artisRIP 9.0**

Specifically designed for artisJet's UV direct to print systems, artisJet WorkStation and artisRIP offer a simple and user friendly intuitive interface.

**artisJet WorkStation main features:**

- Digital smart print workstation in one click with easy integration;
- Unique Braille convex dot stacking algorithm to print Braille quickly and easy;
- Directly convert the ordinary plane printing effect into embossed effect with 3D option;
- Integrated ROT 360 print driver to print in rotary transmission;
- Effective ACS command system for mass production;
- Improved productivity efficiency through AI data recovery integration, multiple tasks printing and pending printing jobs accessibility;
- Store print files with easy transfer or back-up of the print tasks to any location;
- API interface mode to achieve more printing possibilities (HOT FOLDER);
- Third party software compatibility and tasks output directly via virtual printer;
- Ink system cleaning, nozzle check and maintenance directly from Workstation with progress status monitoring;
- Custom flexible adjustment of ink colors and nozzle sequence, improving nozzle life;
- One-on-one image and sample matching due to preset configurations and automated artwork position display according to product position;
- Greatly reduce time management (job print time estimation and print job preview).

**artisRIP main features:**

- Layout editing platform, resize, mirror, text, color adjustment, color gamut check...;
- Raster and vector images support;
- Built in customizable print templates for pens, phone covers, lighters, cosmetics, etc...;
- Previewing and smart nesting.

 **Core technology highlight**

- 1 Ink System Optimization**  
Automatic ink flow, ink cleaning and maintenance;  
Accurate ink level indicator;  
Automatic flash spray of nozzle check on demand;  
Strong substationability for being idle.
- 2 Advanced LED UV Curing Tech**  
Durable UV curing system based on 365;  
Flexible power adjustment on demand;  
Focusing lens to maximize the light power;  
Flexible curing direction on demand;  
Silent working process and extended life span.
- 3 Printing Accuracy and Eco**  
Digital magnetic grid coding system;  
Self-automatic height measurement;  
Built-Air purification system;  
Maintenance kit with all electronics in one drawer.
- 4 Production Efficiency**  
Intelligent production efficiency workflow;  
Accurate print job preview and time estimation;  
Supporting virtual printing;  
Print Braille/ADA signs at one click;  
ACS printing system;  
Easy swift from ROT to flat print;  
API and hot folder integration on demand.
- 5 Safety and Control**  
Ink drop shooting power adjustment;  
Engineer mode for authorized operation;  
Smart ink channel swift among all colors, extending the head life;  
Job pauses once lid opens (Stop-if-Open sensors)

